

<http://SHOP.01media.com>



->>> ProCard <<<-

Revision 1.3.M4.1  
04-09-30

#### **INSTALLATION**

1. Unzip drivers and client software
2. Connect USB cable, after few seconds your Windows should find new hardware
3. Do not choose "automatically search for drivers", browse to the unzipped "FuzzyPro" and Win2KXP or Win98 folder
4. Drivers are being installed. After few seconds your windows will ask you one more time for the drivers, repeat the procedure above.

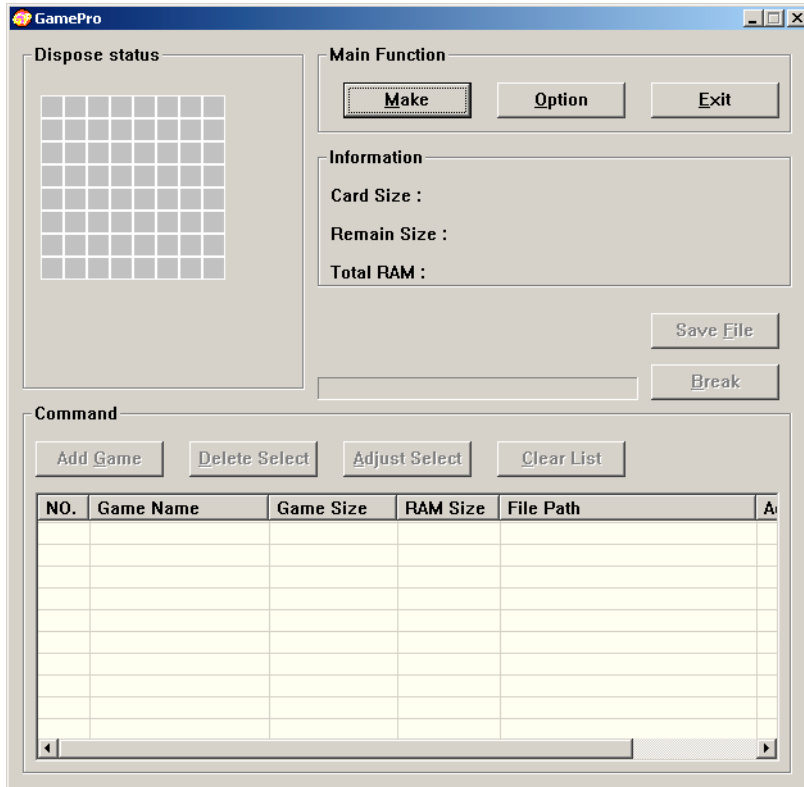
Now you can connect your GBA/GBA SP to the USB cable.

Hold down for few seconds "START" + "SELECT" while you power on your GBA.

## BURNING FILES

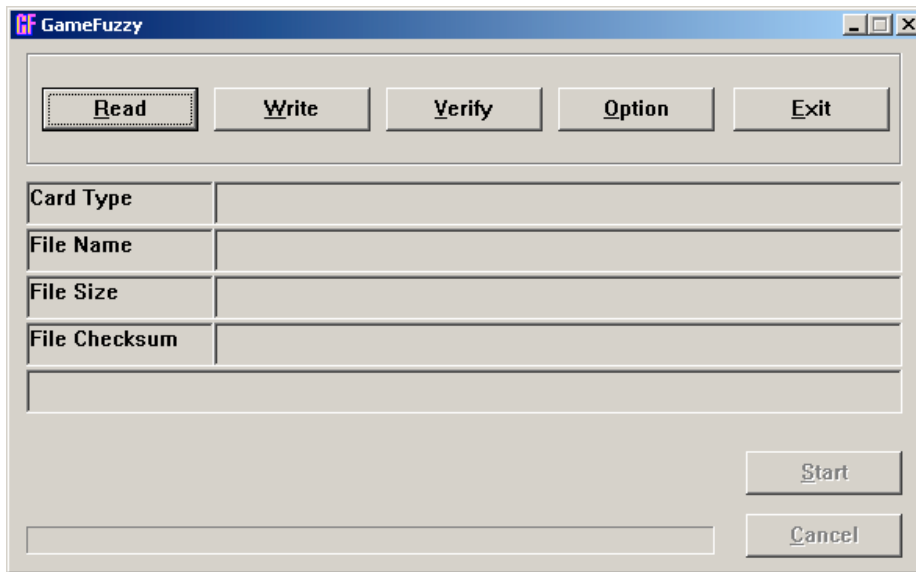
Transferring GBA files to the ProCard flash memory is done in two steps:

1. Use FuzzyPro.exe to make a new GBA ROM file by adding desired ROMs, save it.
  - start GamePro.exe



- click on "Option" and choose card type "128Mbit"
- click on "Make" (to cancel click on "Break")
- use "Ad game" to add your GBA ROM files
- click on "Save File" to save the new multi boot ROM file

2. Burn this ROM file using GameFuzzy.exe



- start GameFuzzy.exe
- click on "Read", you should now see the Game Fuzzy logo on your GBA screen
- click on "Write"
- choose ROM file (original ROM or the one you made using GamePro.exe)

You may upload both .GBA files and zipped .GBA files.

If you don't want to use multiple files, you can skip the first step. Just burn your GBA ROM file directly using only GameFuzzy.exe

#### **BACK-UP YOUR GAMES**

1. Start "GameFuzzy.exe"
2. Click on "Read"
3. Click on "Start"
4. Saves the ROM file on your PC when prompted

#### **SET THE CLOCK**

To set the clock from start menu in GBA please use "B" to reset the clock first.