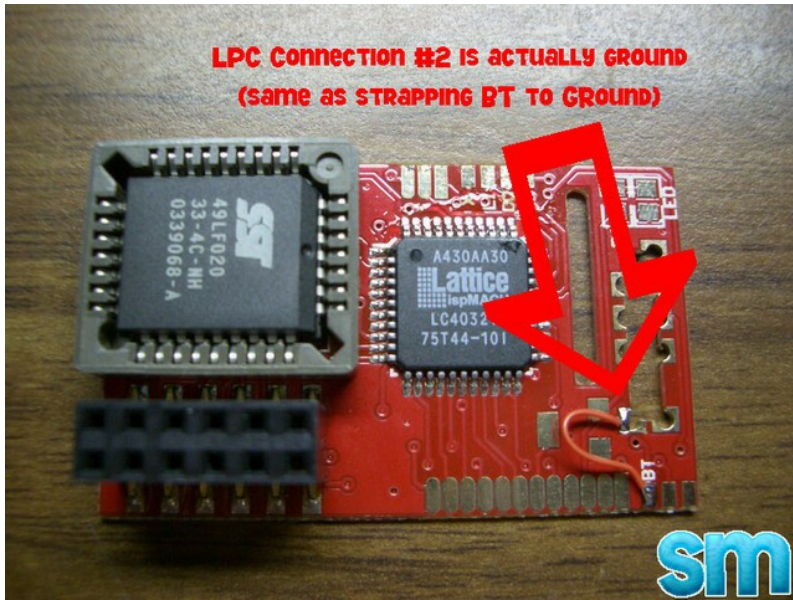


Aladdin Advance XT - installed in 'always enabled' mode on a v1.6 Xbox

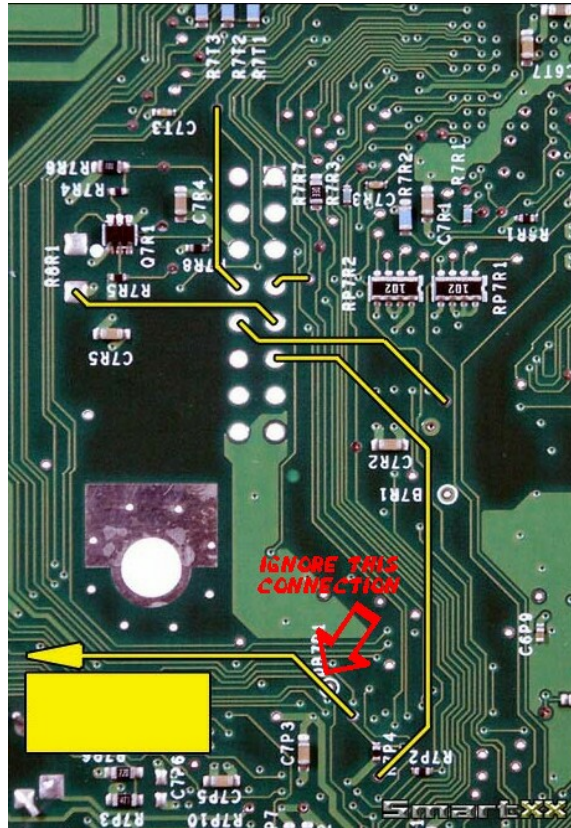
Step One - Solder the male header pins into the Xbox LPC port, with the pins marked with the red X removed.



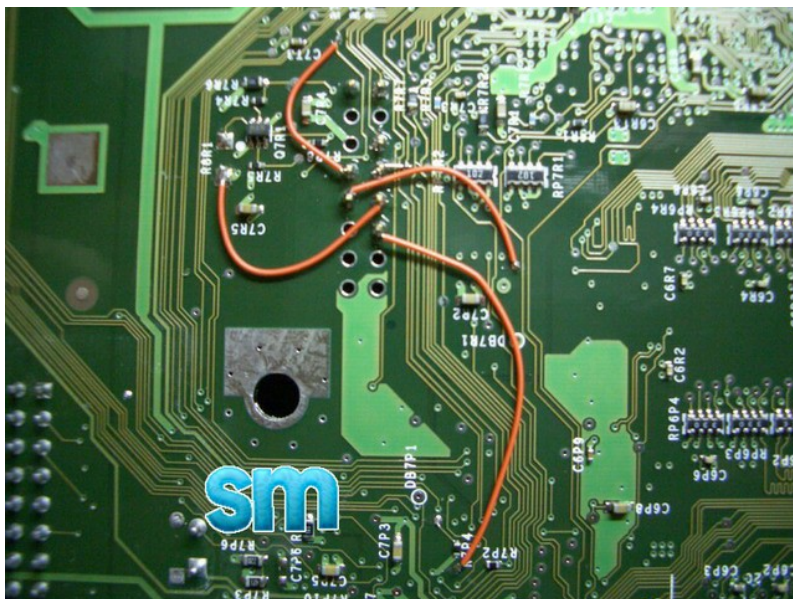
Step Two - Connect the BT connection on the modchip to the LPC connection #2 on the modchip. This is essentially the same thing as connecting BT to ground.



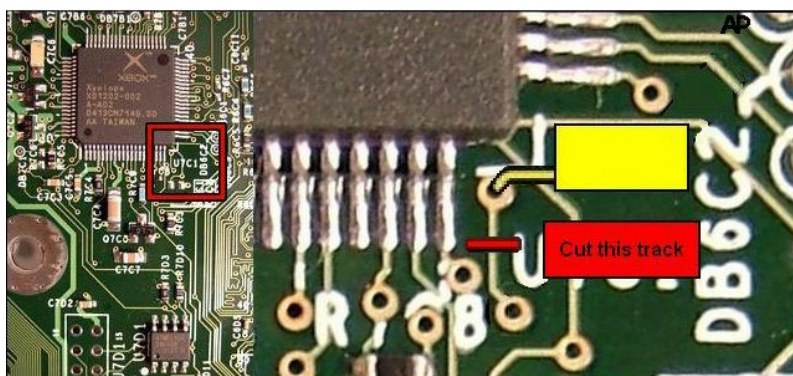
Step Three - Rebuild the Xbox LPC port ala the diagram below. DO NOT CONNECT THE D0 POINT (the one that says 'Ignore This Connection')



Which should look something like this:



Step Four: Cut the LFrame trace as in this diagram:



Step Five - Put modchip on the header pin and that's it!

