



What's New? [Forum](#)

[FAQ](#) [Calendar](#) [Forum Actions](#) [Quick Links](#)

Welcome guest, is this your first visit? Already a member:

Search the forums:

**Login:** shop.01media.com

Password

☐ Save?



Enter search phrase....



[Advanced Search](#)

[Forum](#) [Xecuter RGH & JTAG Product Support](#) [Xecuter DemoN Support](#)

Demon Slim CORONA v1/v3 - Step by Step Installation Guide [+ DemoN Corona QSB]

You may have to **register** before you can post: click the register link to proceed. If you are a current member and have lost your password use the **lost password form**.

Results 1 to 20 of 31

Page 1 of 2 [1](#) [2](#) [Last](#) [»](#)

## Thread: DemoN Slim CORONA v1/v3 - Step by Step Installation Guide [+ DemoN Corona QSB]

[Thread Tools](#) [Display](#)

23rd December 12

#1

ZerOneX

Full Member



**Join Date:** Sep 2011

**Posts:** 49

**Thanks:** 23

Thanked 23 Times in 9 Posts

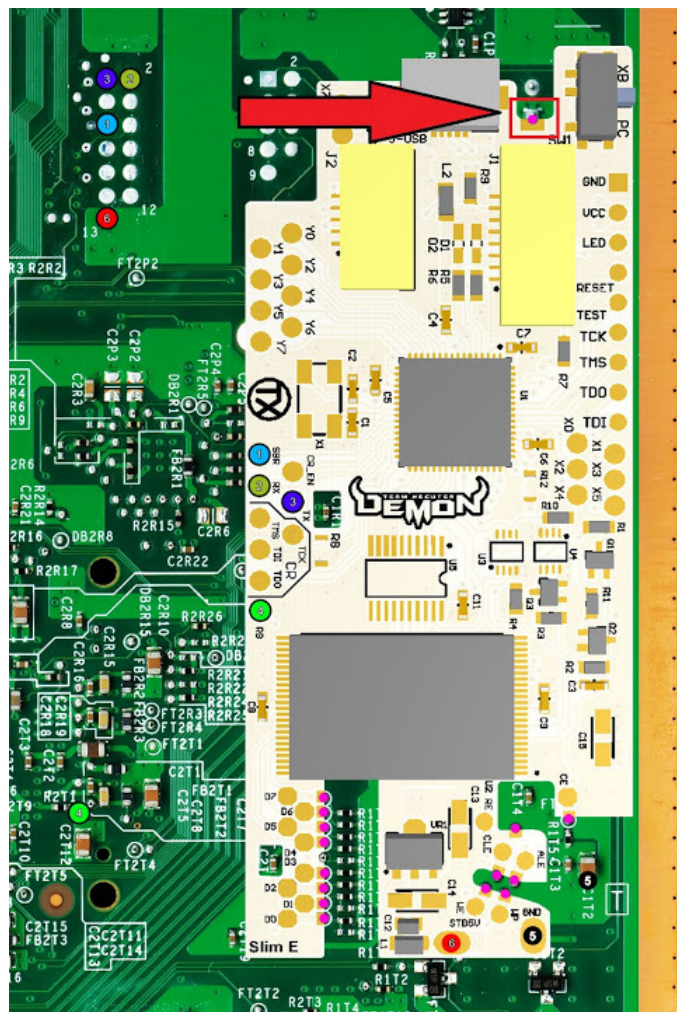
### Demon Slim CORONA v1/v3 - Step by Step Installation Guide [+ DemoN Corona QSB]

Hi folks, as I'm seeing a lot of guys asking for that I did my last Corona following (at least the best as I could) the T-X standards.

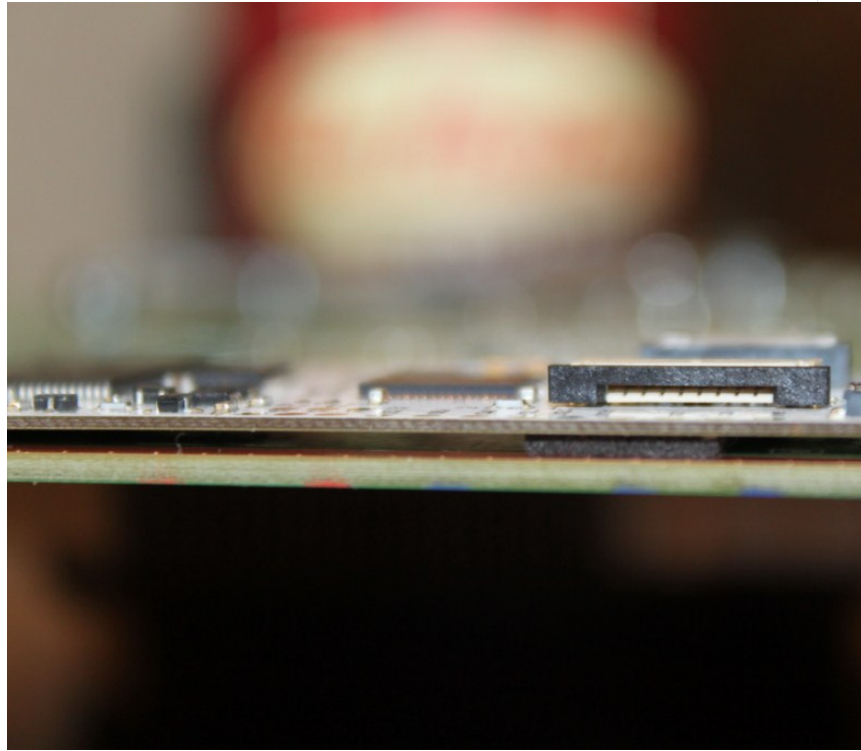
The first few photos I was using a purple wire for 5V VCC and a red to the GND!!! To avoid confusion or mistakes you'll see that I've changed it to RED (5V) and black (GND).

To the rest of them I'm following the same T-X standards as Trinity Guide.

*As corona does not have this anchor point to secure/attach the modchip to the mobo, I'm using 3M double face adhesive tape to do it!!*



*like this photo provided by WNYConsoles (thank you)*



You can take this diagram as base, just taking care about point RB (number 4)

